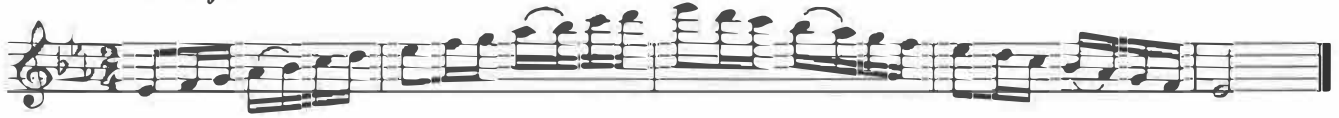
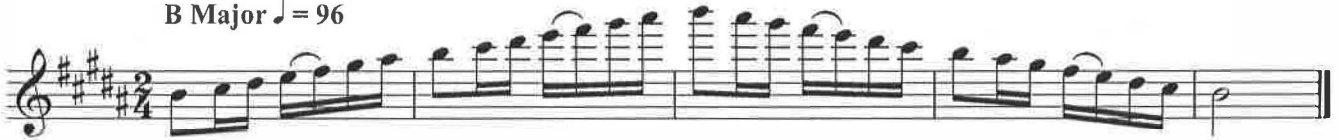


# FLUTE

E $\flat$  Major ♩ = 96



B Major ♩ = 96



Chromatic ♩ = 96



# THE HOUNDS OF SPRING

A Concert Overture for Winds

1st Flute

ALFRED REED  
(1980)

**Allegro con brio**

The musical score for the 1st Flute part consists of four staves. The first staff begins with a large bracket on the left and contains measures 1 through 9. It starts in 6/8 time, changes to 3/4, then 6/8, and finally 3/4. Dynamics include *ff* and *sim.*. A measure rest of 3 is indicated in the second measure. A box with the number 9 is at the end of the first staff. The second staff contains measures 10 through 15. The third staff contains measures 16 through 18. The fourth staff contains measures 19 through 21 and ends with a large bracket on the right. A box with the number 16 is above the first measure of the fourth staff.