

Wright State University  
School of Music

Audition  
Set B

Tenor Trombonists: Prepare only excerpts 1-8.  
Bass Trombonists: Prepare only Excerpts 2-4, and 8-12.

Band / Wind Ensemble Auditions –

**TROMBONE & BASS TROMBONE**

PAGE 1 of 5

Trombone 1-2

**Kokopelli's Dance**

Commissioned for the UNLV Wind Orchestra, Thomas G. Leslie, Conductor

Nathan Tanouye

#1

Allegro ♩ = 120

#2

from Grainger's "Irish Tune from County Derry"

FLOWINGLY

(♩ = ca. 72)

very clingingly

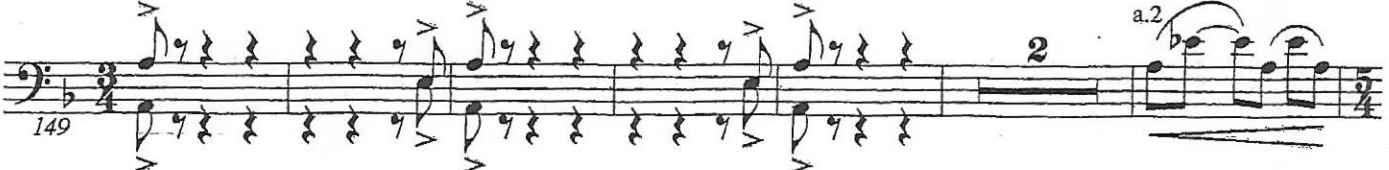
mf very feelingly

#3

Kokopelli's Dance - Trombone 1-2



142 Allegro ♩ = 140



Rossini - La Gazza Ladra

#4

Excerpt 1 - Overture: [C] to 23 measures after [C]  
Trombone 1

START



SCORE



WSU School of Music — Band Audition Excerpts  
TROMBONE / BASS TROMBONE (continued)

(START) →

#5

(♩ = 52)

Richard Wagner, Tannhäuser Overture

(3/4)

#6

Aaron Copland: "Appalachian Spring"

TROMBONE

(♩ = 80)

cant.  
I Solo

Twice as fast (♩ = ♩) (♩ = 160)

f vigoroso e marc.

TROMBONE  
open

From Merton Goulds  
"West Point Symphony," mt. 2, "Marches"  
6/8 in 2<sup>nd</sup> (♩ = 126)

#7

Measures 1-4 of excerpt #7. Bass clef, key signature of two flats, 6/8 time signature. Dynamics include *f* and *mf*.

312

Measures 5-8 of excerpt #7. Bass clef, key signature of two flats, 6/8 time signature. Dynamics include *mf*.

from Charles Ives  
"Variations on 'America'"

Più mosso (♩ = 126) (Double Tongue 16<sup>ths</sup> in first 3 measures)

#8

Measures 1-3 of excerpt #8. Bass clef, key signature of two flats, 3/4 time signature. Dynamics include *ff*.

Measures 4-6 of excerpt #8. Bass clef, key signature of two flats, 3/4 time signature. Dynamics include *mf* and *ff*. Includes a square box with the letter 'S'.

Meno mosso (♩ = ca. 100)

Measures 7-9 of excerpt #8. Bass clef, key signature of two flats, 3/4 time signature. Dynamics include *mp* and *fff*.

Measures 10-12 of excerpt #8. Bass clef, key signature of two flats, 3/4 time signature. Dynamics include *f*.

Measures 13-15 of excerpt #8. Bass clef, key signature of two flats, 3/4 time signature. Dynamics include *f*.

Measures 16-18 of excerpt #8. Bass clef, key signature of two flats, 3/4 time signature. Dynamics include *ff*, *poco rit.*, and *ffp*.

Schumann: Symphony No. 3 (fourth movement: beginning-13 after A)

#9

BASS TROMBONE

Feierlich

pp Solo

nach und nach stärker

Bass Trombone

#10

141

(♩ = 72)

mp poco a poco cresc.

ff cresc.

fff! fff

#11

(♩ = 64)

BASS TROMBONE

Allarg... Meno Mosso

ff pesante

rit...

109 Lento

Kokopelli's Dance Bass Trombone

#12

142 Allegro (♩ = 140)

START HERE

sffz

ff

mp cresc.

mp